



Quick Guide

Introduction

A SALUS FC600 is a device suitable for controlling your fan coil unit in both 2 pipe and 4 pipe systems and for managing the temperature in your home and/or working environment. For an internet connection (Online Mode), this product must be used with the SALUS Universal Gateway (UG600/UGE600) and the SALUS Smart Home App. You can also use the SALUS FC600 without an internet connection (Offline Mode). Go to www.salus-smarthome.com for the full PDF version of the manual.

Product Compliance

This product complies with the essential requirements and other relevant provisions of Directives 2014/30/EU, 2014/35/EU, 2014/53/EU and 2011/65/EU. The full text of the EU Declaration of Conformity is available at the following internet address: www.saluslegal.com.

Safety Information

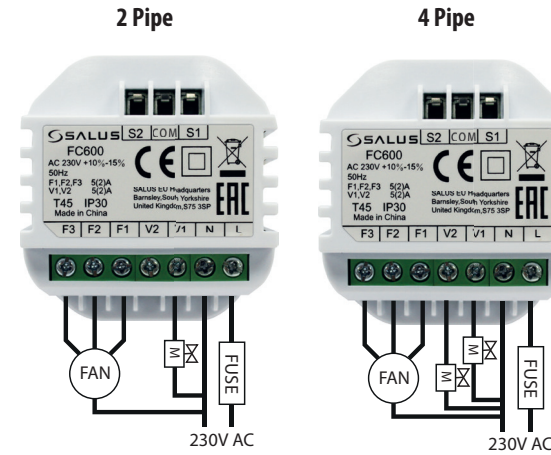
Use in accordance with the regulations.
Indoor use only.
Keep your equipment completely dry.
Disconnect your equipment before cleaning it with a dry towel.

Installation

Terminal Name	Function
L	230VAC Live input
N	230VAC Neutral input
V1	4 pipe: for Hot Water valve output 2 pipe: for Heating or Cooling
V2	4 pipe: for Chilled water valve output 2 pipe: no need to wire the V2 output
F1	• Fan Speed control (Low level)
F2	• Fan Speed control (Medium level)
F3	• Fan Speed control (High level)
S1	Heat/Cool changeover or pipe sensor
S2	Occupancy sensor or external sensor
COM	Common Terminal

Wiring Option 1

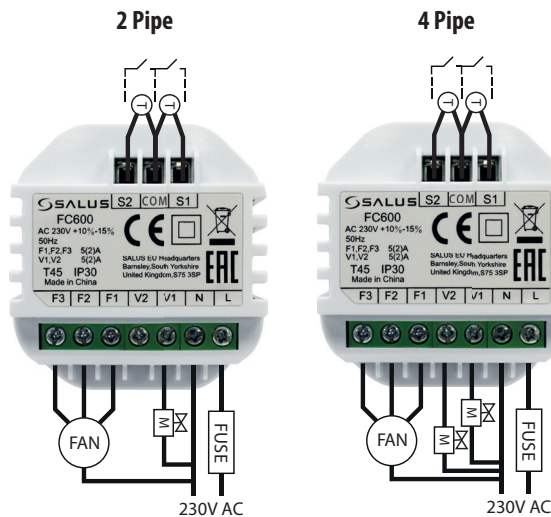
S1, S2 have no connection to external sensors or switches



V1: Heating or Cooling Valve
V2: Not Available

Wiring Option 2

S1, S2 are connected to external sensors or switches

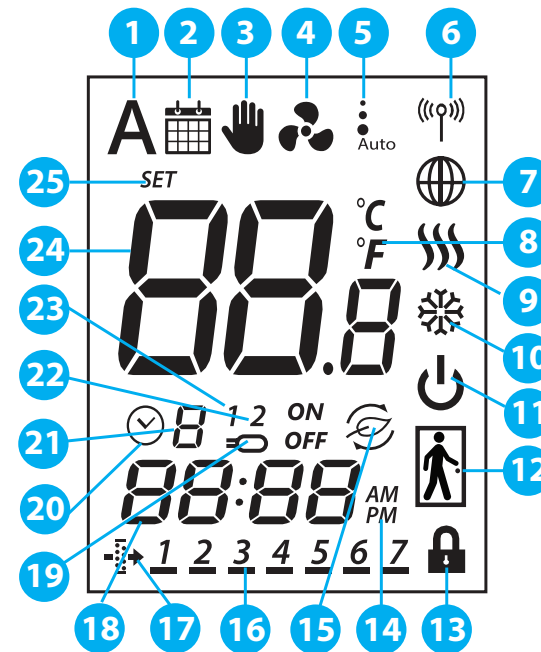


V1: Heating or Cooling Valve
V2: Not Available

Button Functions

Key	Function		
▲	Increase Button		
▼	Decrease Button		
🌀	Fan Speed Low, Medium, High, Auto, Off		
M	Mode button		
	Digital	Short press	Long press(2 sec)
	Programmable	Heat/Cool/Eco selection	Offset, Time
		Permanent override AUTO	Programming schedule
		Heat/Cool/Eco selection	Offset Time&Date
✓	Short press: Confirm function Long press (2 sec): Activate/deactivate standby mode.		

LCD Icon description



1. Auto heat/cool selection
2. Schedule icon
3. Permanent/temporary override
4. Fan is running(icon is animated)
5. Fan speed (low, medium, high, Auto, OFF)
6. Wireless communication with the Universal Gateway
7. FC600 is connected to the Universal Gateway and Internet
8. Temperature unit
9. Heating Mode ON
10. Cooling Mode ON
11. Standby mode
12. Occupancy/vacancy sensor
13. Lock function
14. AM/PM
15. Eco Mode
16. Current day of the program
17. Filter needs to be replaced
18. Current time
19. Sensor indicators
20. Timer icon
21. Program number
22. Sensor indicators
23. Sensor indicators
24. Room/setpoint temperature
25. Setpoint temperature indicator

LCD Icon description



Getting Started

1. With UG600 / UGE600 and internet connection for wiring options 1 and 2

1. With UG600 / UGE600 and internet connection for wiring options 1 and 2

2. Make sure that your Universal Gateway is installed and added to the app. The LED must be blue.

3. Available on the App Store / Google play

4. Scan for equipment

5. Scan for equipment

6. Home / Equipment / Settings

7. All equipment / OneTouch / Gateways

8. Ungrouped Equipment / Add new Equipment

9. Scan for equipment

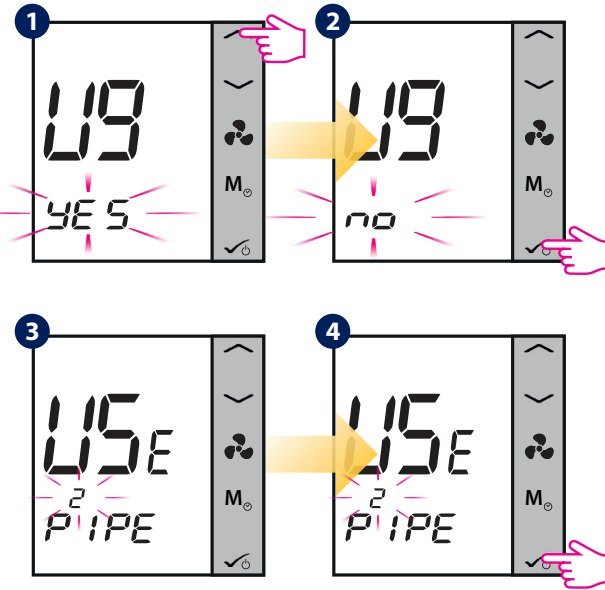
10. Success! Installation completed. (Standby Mode)

Set up your device on the App

If you want to turn the FC600 on press or switch it on via the App.

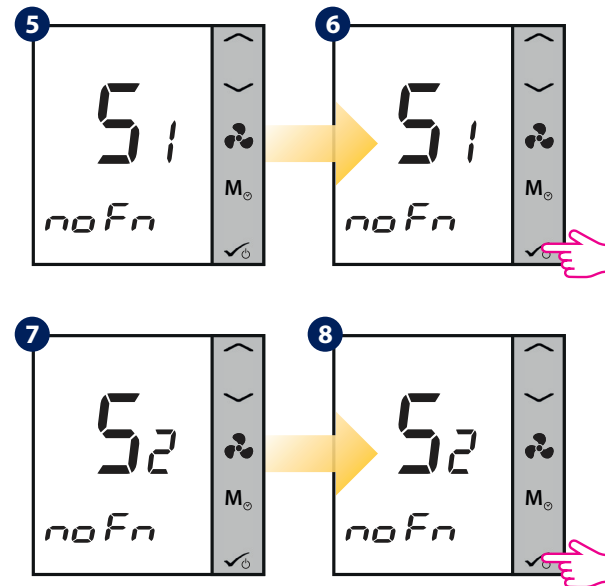
Getting Started

1. Without the UG600 / UGE600 and internet connection for wiring options 1 and 2

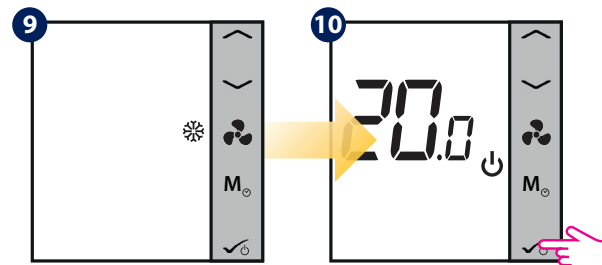


Press UP/DOWN to select 2 or 4 pipe.

Note: If you are using Wiring Option 1 please follow steps 5-12 below. If you are using Wiring Option 2 then please select the relevant settings for S1 and S2 from the table below.

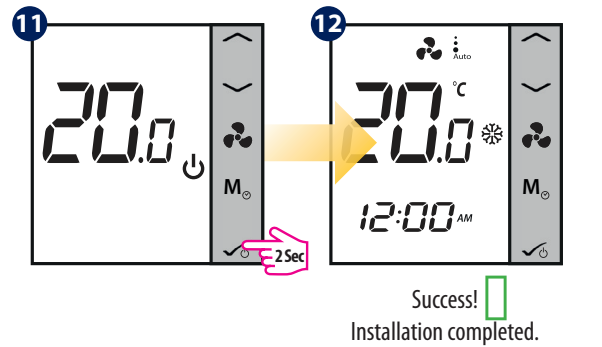


S1 noFn	No function
S1 HCCO	Heat/cool change over
S1 Auto	Auto heat cool changeover
S2 nofn	No function
S2 door	Occupancy sensor
S2 sens	External temperature sensor



Press UP/DOWN to select the operating mode. It can be , , or . Press to confirm your choice.

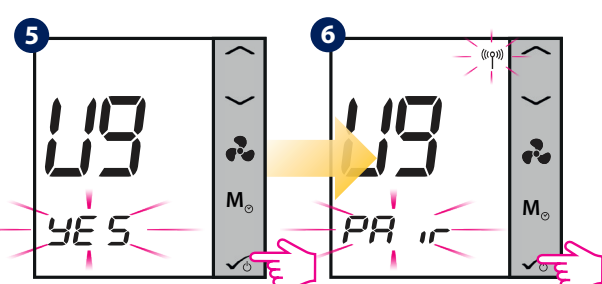
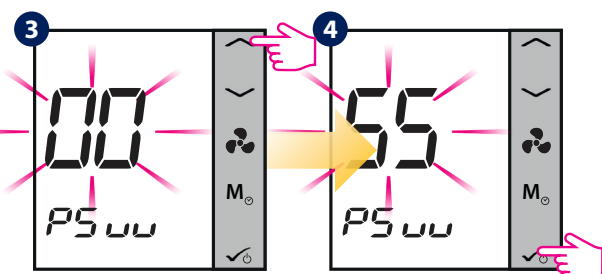
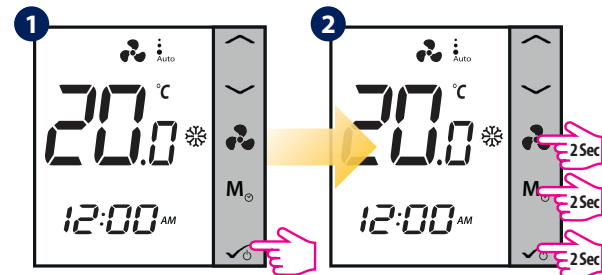
You are now in Standby Mode.



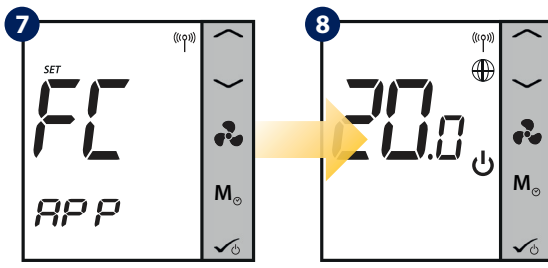
Success! Installation completed.

Changing from Offline Mode to Online Mode

If you want to use the internet App and the Universal Gateway, you need to change your thermostat settings from Offline Mode to Online Mode. For that please follow the steps below:



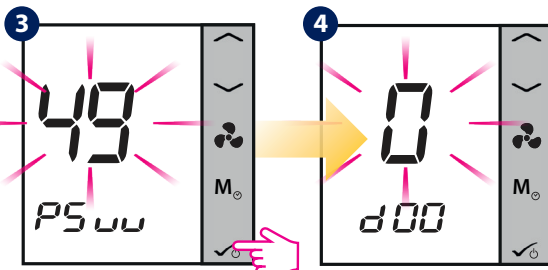
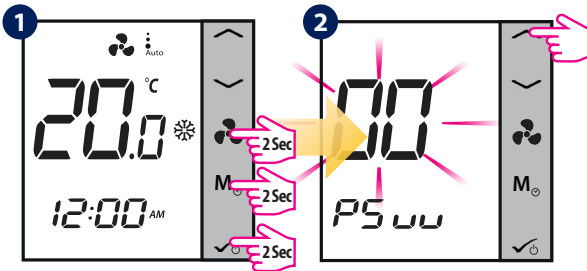
Press from the App and follow the on screen instructions.



Set up your device on the App.

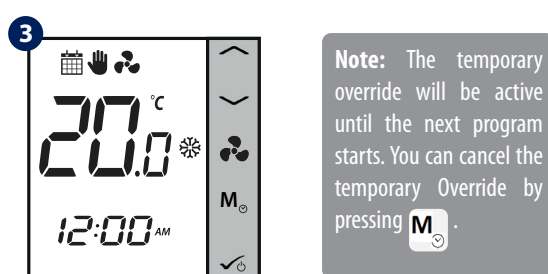
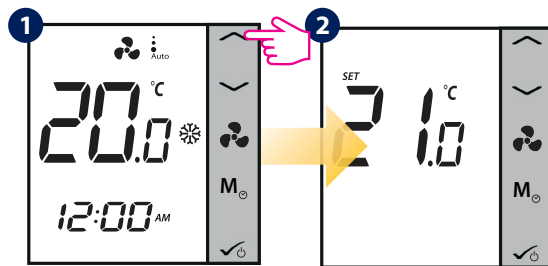
You're now in Standby Mode.

Installer Settings

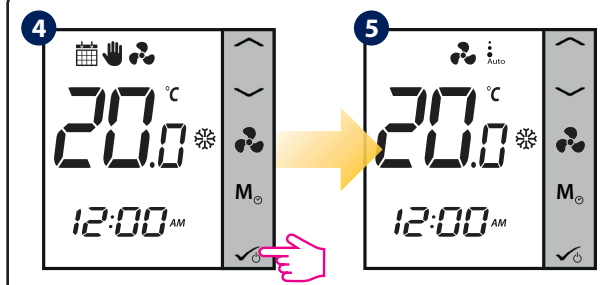


Note: To view the full list of parameters, please consult the full manual at www.salus-manuals.com

Temporary Override



Note: The temporary override will be active until the next program starts. You can cancel the temporary Override by pressing .



Factory Reset

If you have made an error or need to change your system parameters, or want to return to the factory settings, please follow steps below. By performing this action you will lose all your settings.

